

Community Planning Information Pack

Community
Places



Community Planning Information Pack

Introduction.....	3
What is Community Planning?.....	4
Power of Well-being.....	9
New Councils.....	13
New Health Structures	17
New Education Structures	24
Special Programmes.....	26
Sub Regional Community Networks	31
Northern Ireland Assembly.....	38
Community Places	45

Introduction

This Community Planning Information Pack has been published by Community Places as part of our Supporting Communities in Community Planning Project. The Project is funded by the Big Lottery Fund Reaching Communities Programme.

The aims of the pack are to enable community and voluntary groups to better understand Community Planning, support them in their efforts to shape its design and implementation and to help them prepare for its introduction. The pack provides information on the current proposals for Community Planning and on how it operates in other countries. It also includes details of the proposed new 11 District Council model, changes within the structures of the Health and Education Services and the structures for the delivery of a number of funding programmes.

The contact details for urban and rural community development networks who provide advice and support to communities during this time of unique and unprecedented change are also provided. Our Supporting Communities in Community Planning Project is working with many of these networks to provide information for local community groups and to develop their capacity for engagement with Community Planning. We are also working with networks to develop models and examples of locally focused community plans.

The pack will be updated on a regular basis and will include information on the further development and refinement of Community Planning and on related aspects of the Review of Public Administration.

If you would like to know more about the Project please contact Annie Clarke on 028 9023 9444 or by email at annie@communityplaces.info.

August 2011



LOTTERY FUNDED

Supporting Communities in Community Planning

What is Community Planning?

Community Planning is a relatively new term to the region and has recently come to the fore with the Review of Public Administration (RPA) and the subsequent Review of the Local Government Aspects of RPA. However in other regions including Scotland, England, Wales and the Republic of Ireland Community Planning has been implemented in one form or another for almost a decade.

Perhaps the most straightforward definition of Community Planning is provided by Audit Scotland in its Report "Community Planning: An Initial Review". It defines Community Planning as:

"the process through which public sector organisations work together and with local communities and the voluntary sector, to identify and solve local problems, improve services and share resources".

This definition is a great starting point, but in order to distinguish the different aspects of Community Planning proposed here from those elsewhere, it is important to understand the key elements of Community Planning, outlined by the then Minister of Environment, Arlene Foster MLA in a statement to the Assembly in March 2008. The Minister said key components will include:

- an effective, statute-based Community Planning process;
- led and facilitated by the new councils;
- a clear statutory requirement on all other public bodies including policing, health and education bodies to participate in and support the Community Planning process;
- a clear duty placed on councils to engage with local communities to produce a community plan.

The table overleaf gives examples of how Community Planning has been described both here and in other countries where it already operates. The examples range from strategic views to local definitions. A list of useful websites is also provided.

In order to fully embrace the potential for Community Planning, it is important to have an understanding of the overall decisions that have emerged from the Review of Public Administration and specifically those relating to local government. The following sections identify the key decisions and how they will impact upon communities at a local level.

What is Community Planning?

The following definitions are taken from a range of sources including Government Legislation, Council Community Plans/Strategies and Local Community Plans.

	Scotland	England and Wales	Republic of Ireland	Northern Ireland
Strategic View	<p>Community Planning is a process whereby the public services in the area of a Local Authority are planned and provided after consultation and (ongoing) co-operation among all public bodies and with community bodies.</p> <p>Local Government Act 2003</p>	<p>Public bodies need to identify and understand the needs and aspirations of their citizens and the communities that they serve, and then plan to meet those in the most responsive, accountable and effective way.</p> <p>At the local level, this means local authorities and other partners working closely to shape the medium- and long-term development of their areas while actively engaging with citizens and communities as a vital part of that process. A process known as Community Planning.</p> <p>'Local Vision' - Statutory Guidance from the Welsh Assembly Government</p>	<p>A County/City Development Board operates under the aegis of each County or City Council.</p> <p>The Boards bring together all players locally – the public sector agencies, the social partners, local government and local development – to seek common cause in developing their counties and cities, in planning for the future with better co-operation and co-ordination and to operate in a more integrated way.</p> <p>Department of Environment and Local Government</p>	<p>The aim of Community Planning is to make sure that people and communities are genuinely engaged in decisions made about the public services which affect them.</p> <p>Allied to this is a commitment/duty by all those who deliver services in the council area to work together to provide co-ordinated, high-quality outcomes people rightly expect. The drive for Community Planning should be seen in the context of the process to create more responsive and effective public services for citizens.</p> <p>Review of Public Administration</p>

Section I - Community Planning

	Scotland	England and Wales	Republic of Ireland	Northern Ireland
Council View	<p>Community Planning is the process through which the connections between national priorities decided by the Scottish Executive and those at Highland, local and neighbourhood levels are improved.</p> <p>It is about making sure that people and communities in the Highlands are genuinely engaged in making decisions on public services which affect them. It requires a commitment from organisations in the Highlands to work together, not apart, in providing better public services.</p> <p>The Highlands Council</p>	<p>Community Planning is a way of giving local people the opportunity to create a shared vision for their area and identify priorities for action which are agreed by a wide range of people, organisations and groups.</p> <p>Devon County Council</p>	<p>The Louth County Development Board brings together various strands involved in local government, local development, the state agencies at local level and the social partners which includes the community and voluntary sector. The broad functions of the Board are to:</p> <ul style="list-style-type: none"> • draw up a comprehensive County Strategy on social, economic and cultural development; • identify gaps and duplication in local service delivery; • nurture constructive co-operation and active participation by all members of the Board based on a partnership approach; • oversee the implementation of the Strategy. <p>Louth County Development Board</p>	<p>The proposed Community Planning process will provide a framework for making public services responsive to, and organised around, the needs of communities. The two main aims of Community Planning can be described as:</p> <ul style="list-style-type: none"> • making sure people and communities are genuinely engaged in the decisions made on public services which affect them; allied to • a commitment from organisations to work together, not apart, in providing better public services. <p>Northern Ireland Local Government Association</p>

Section I - Community Planning

	Scotland	England and Wales	Republic of Ireland	Northern Ireland
Local View	<p>Community Planning is a way of working that brings together organisations and the communities they serve to improve the quality and range of services for local people.</p> <p>Wigtown Area Community Plan</p>	<p>Community Planning is about working across organisational and geographic boundaries to use resources more effectively and to ensure that communities are able to influence decision-making.</p> <p>Llanelli Community Network</p>	<p>The local strategy addresses the economic, social and physical development of Dunmanway and its hinterland and sets out a framework of objectives and actions for the next ten to fifteen years, with a view to making the area a better place to live, learn, work, visit and do business.</p> <p>Dunmanway Integrated Development Strategy, Cork</p>	<p>Community Planning is the opportunity for communities and individuals to have a say in the way they are governed, in the decisions that affect their lives and the way public money is spent.</p> <p>'Putting the Community into Community Planning' - Sustainable Northern Ireland Project</p>

Section I – Community Planning

Useful Websites

Community Planning

www.cdb.ie	Republic of Ireland
www.communityplanning.net	England
www.improvementservice.org.uk/community-planning	Scotland
http://wales.gov.uk/topics/localgovernment/partnership/commstrategies	Wales

Voluntary and Community

www.communityplaces.info	Community Places
www.nicva.org	Northern Ireland Council for Voluntary Action
www.nienvironmentlink.org	Northern Ireland Environmental Link
www.nilga.org	Northern Ireland Local Government Association
www.ruralcommunitynetwork.org	Rural Community Network

Government

www.rpani.gov.uk	Review of Public Administration Updates
www.deni.gov.uk	Department of Education
www.dhsspsni.gov.uk	Department of Health, Social Services and Public Safety
www.doeni.gov.uk/index/local_government	Department of Environment – lead department on restructuring local government.
www.niassembly.gov.uk	Northern Ireland Assembly
www.ninis.nisra.gov.uk	Official Statistics for Northern Ireland

Power of Well-being

Alongside the responsibility of leading the Community Planning process, new councils will also be able to use the Power of Well-being, but what does this mean?

According to the Northern Ireland Executive's 'Emerging Findings Paper', "in order to facilitate community planning, new councils would also have a new Power of Well-being. This would allow them to take any action, not already the responsibility of another agency, linked with the community plan that would improve the well-being of the local community or area".

The Power of Well-being has not yet been introduced here, however, by examining the practical implementation of the Power of Well-being in England, Wales and Scotland, it can provide a background to the power and how it may be applied here in the future.

England and Wales

In England and Wales, the Power of Well-being is intended to give local authorities increased opportunities to improve the quality of life within their local communities. In 2007, the Local Government and Public Involvement in Health Act 2007 extended the well-being power to Parish Councils which meet a number of pre-conditions. For more information please visit www.communities.gov.uk/publications/localgovernment/powertopromote

The Power of Well-being enables local authorities to do anything that they consider is likely to achieve the promotion or improvement of any one or more of the following:

- the economic well-being of their area;
- the social well-being of their area;
- the environmental well-being of their area.

Actions that councils may undertake include, but are not limited to, giving financial assistance, incurring [unlimited] expenditure, facilitating and co-ordinating activities and providing staff, goods and services or accommodation to any person. However, when using the well-being power, councils should also take into account government guidance and their community strategy/plan.

Councils can look to well-being in the first instance, rather than searching for an alternative power to take action on a particular issue. Before using the power, councils should consider four tests:

- is the activity likely to promote or improve well-being in the area?
- is the primary purpose to raise money?
- is it explicitly prohibited by other legislation?
- are there any explicit limitations or restrictions in other legislation?

(taken from the Government guidance on 'Power to promote or improve economic, social or environmental well-being')

If councils answer yes to the first question and no to the other questions then they can consider using their Power of Well-being.

Section 2 – The Power of Well-being

Limitations of the Power in England and Wales

As with all powers, there are restrictions on the use of the Power of Well-being. The three key restrictions are:

- authorities cannot do anything that is prohibited, restricted or limited in other legislation;
- authorities cannot use the power itself to raise money either through precepts, borrowing, taxing or charging;
- authorities cannot do anything that the Secretary of State has specified by order - a reserve power that will be rarely used.

Scotland

In Scotland the Local Government in Scotland Act 2003 introduced a power for local authorities to do anything which advances the well-being of their areas, or the residents of those areas. The power includes:

- incurring expenditure;
- giving financial assistance to any person;
- entering into arrangements or agreements with any person;
- co-operating with, or facilitating or co-ordinating the activities of, any person;
- exercising on behalf of any person any functions of that person; and
- providing staff, goods, materials, facilities, services or property to any person.

Limitations of the Power in Scotland

The guidance on the Power to Advance Well-being outlines a number of limitations on the use of the power. These include:

- does not enable a local authority to do anything which it is, by virtue of a limiting provision, unable to do. A 'limiting provision' is one which explicitly prohibits or explicitly prevents the local authority from doing anything or explicitly limits its powers in that respect, and is expressed in any enactment.
- shall not be exercised in a way that unreasonably duplicates the legislative functions of another body.
- does not enable a local authority to do anything which may be done under the Local Authorities (Goods and Services) Act 1970.
- does not enable a local authority to raise money by levying any form of tax or charge. This does not however prevent a local authority from setting and determining amounts of council tax.
- does not allow local authorities to promote economic development outside the United Kingdom without the prior consent of the Scottish Ministers.

Case Studies

The following case studies highlight how the Power has been applied in Scotland and England.

Modern Housing Estate and Play Area at Dunfermline, Scotland

A modern housing estate was granted planning permission under the condition that a play area be installed. Unfortunately the developer built the housing but failed to install the play area. The residents requested action from the local authority but by the time the matter came to be addressed, the houses had all been built and the developer had sold any remaining interest in the estate.

There were clear enforcement powers under the planning legislation but, in terms of that legislation, enforcement action would have to be taken against the owners of the land - the very residents who were complaining about the lack of a play area in the first place. In this instance, the Power to Advance Well-being seemed to offer an attractive solution. The developer was advised that, if the play area was not installed voluntarily, then the Council would do so and recharge the developer. This resulted in action on the part of the developer and the play area is now being installed by agreement and at the developer's cost.

Hastings Borough Council, England - Suntan Lotion

Hastings, situated on the south coast, derives much of its income from tourism and has used the well-being power to promote safe sunbathing. Hastings Borough Council was approached by a local manufacturer IT&C two years ago. The manufacturer wanted to work in partnership with the council and offered to sell to the council bottles of suntan lotion at around £1.95 a bottle which is considerably cheaper than many branded lotions.

In 2001 Hastings Borough Council created a national first when its lifeguards started giving out free suntan lotion on the beach; the move was enthusiastically taken up by local, regional and national press. In 2002 the Council went one step further and sold bottles of the lotion - 2,000 in total. The partnership between the Council and local toiletries manufacturer IT&C means that the unique Hastings & St Leonard's suntan lotion was sold at half the price of branded lotions at £2.95. This work on promoting safe sunbathing has been endorsed by SCaRF - the Skin Cancer Research Fund and of every bottle sold, 20p is given to the charity to support its research work.

The Council has not made any profit from this partnership as the 80p made from every bottle has been used to cover the costs of promotion. In addition, the Council has continued to give out free bottles to its residents, for example to children who participate in council-organised play days. Kevin Boorman, the Council's Marketing and Communications Manager said, "selling 'Harbour Arm', our own sun tan lotion, has been brilliant. We featured heavily in local and regional media, and, as well as obviously promoting 'safe sun,' and helping SCaRF, we have promoted the town as well - at no cost to anyone!"

Section 2 – The Power of Well-being

Wakefield, England – Purchase of Houses in a Declining Area

The Well-being Power has been used in Wakefield to purchase houses on an estate in rapid decline. This was to facilitate a speedy clearance of the site and to afford reasonable recompense to residents and owners, without going through the lengthy compulsory purchase (CPO) process. This estate – which was split equally between owner-occupied, housing association-owned and private landlord-owned residences – was overwhelmed by anti-social behaviour and drug-related problems resulting in many unfit or vacant homes. These factors contributed to a reduced market value of the remaining habitable houses.

The council was keen to acquire and demolish the houses and rehouse the remaining occupants. To achieve property acquisitions, intensive negotiations took place directly with owners based on criteria of current market value and considerations of community gain. This meant some properties were purchased over the current market value to achieve the development strategy in the most cost effective manner for the council.

There were criteria for the people living in the estate. If they kept their home in good order the local authority would give them full market price plus recompense for disturbance and re-location. Agreements were made with the housing association which agreed to demolish its properties and re-house its tenants. If the property was privately owned and it was abandoned the landlord would be given £3,000 to give over rights to the property to the council.

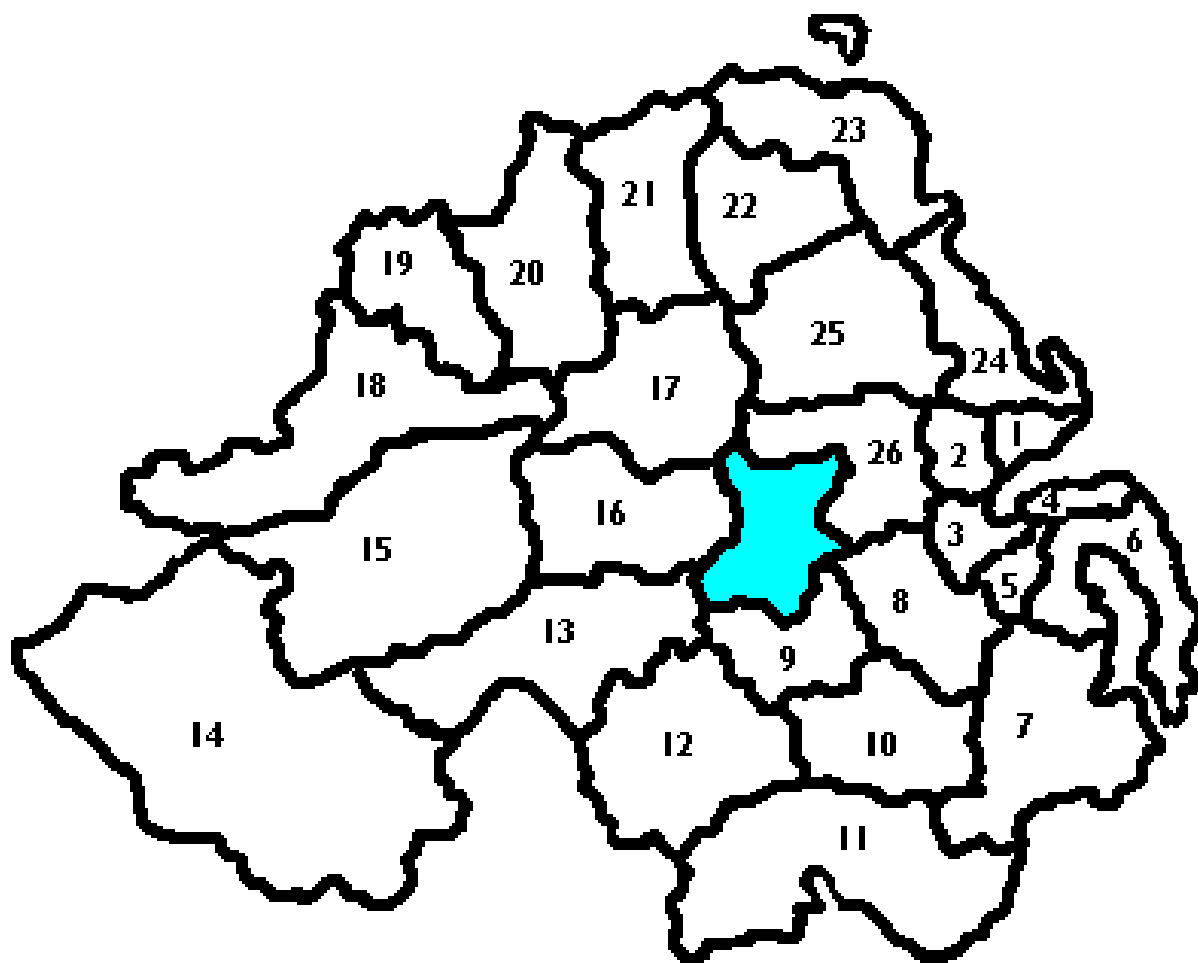
The prevailing rationale was that use of the Well-being Power would facilitate appropriate action relatively quickly and effectively. Without the Power it was difficult to see how any action could be taken quickly enough.

Source:

The above case studies are extracts from the Local Government Association's 'Powering up: making the most of the power of well-being' Paper, 2003 and the Department for Communities and Local Government's "Formative Evaluation of the Take-Up and Implementation of the Well Being Power", 2006 and "Practical use of the Well-Being Power", 2008.

New Councils

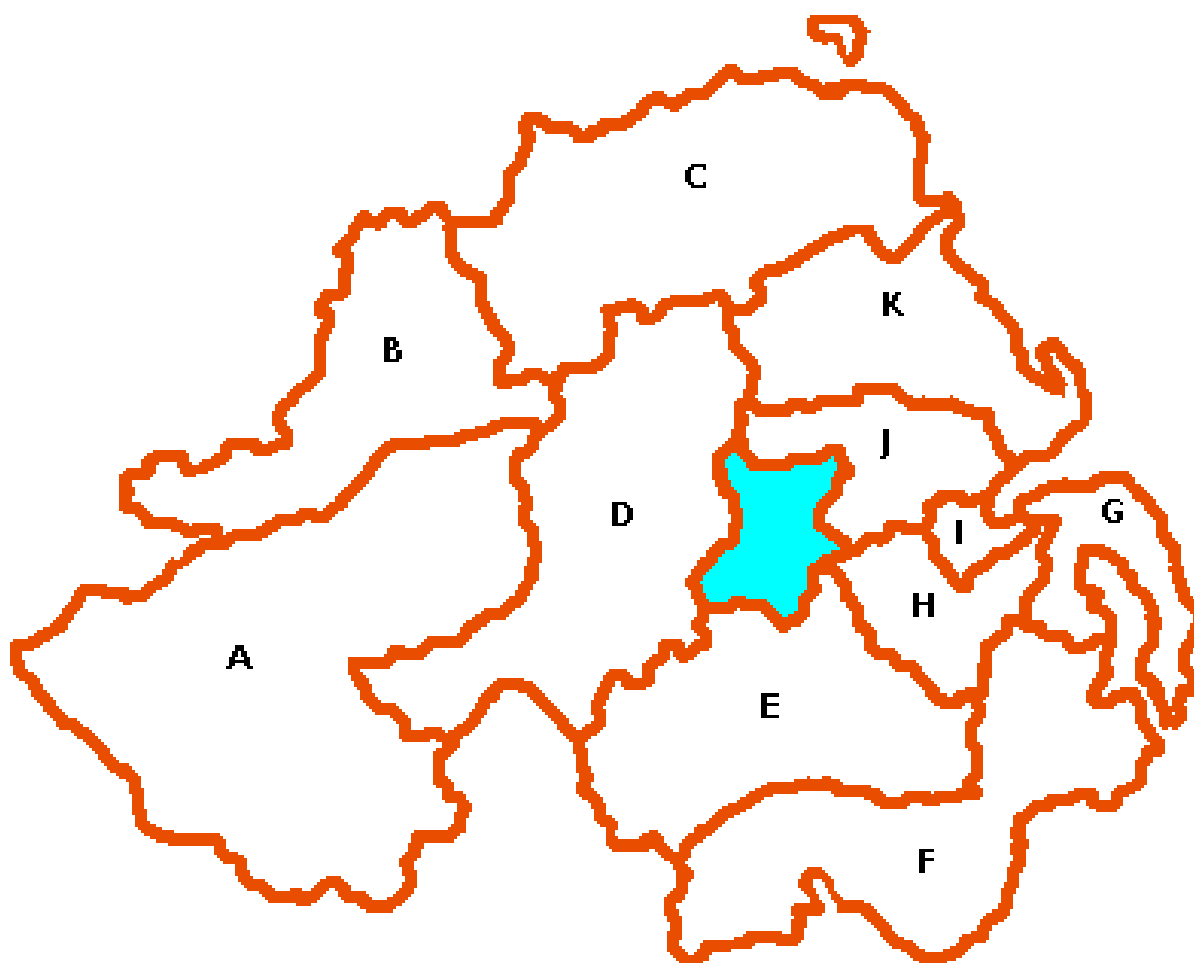
Current 26-Council Structure



Key:

1	Carrickfergus Borough Council	14	Fermanagh District Council
2	Newtownabbey Borough Council	15	Omagh District Council
3	Belfast City Council	16	Cookstown District Council
4	North Down Borough Council	17	Magherafelt District Council
5	Castlereagh Borough Council	18	Strabane District Council
6	Ards Borough Council	19	Derry City Council
7	Down District Council	20	Limavady Borough Council
8	Lisburn City Council	21	Coleraine Borough Council
9	Craigavon Borough Council	22	Ballymoney Borough Council
10	Banbridge District Council	23	Moyle District Council
11	Newry and Mourne District Council	24	Larne Borough Council
12	Armagh City and District Council	25	Ballymena Borough Council
13	Dungannon and South Tyrone Borough Council	26	Antrim Borough Council

New 11-Council Model



Key:

Amalgamating Councils	Name of New Councils as recommended by the Local Government Boundaries Commissioner
A Fermanagh and Omagh	Fermanagh and Omagh District
B Derry and Strabane	Derry and Strabane District
C Limavady, Coleraine, Moyle and Ballymoney	Causeway Coast and Glens District
D Magherafelt, Cookstown and Dungannon	Mid Ulster District
E Armagh, Craigavon and Banbridge	Armagh, Banbridge and Craigavon District
F Newry and Mourne and Down	Newry, Mourne and Down District
G Ards and North Down	North Down and Ards District
H Lisburn and Castlereagh	Lisburn and Castlereagh District
I Belfast	Belfast District
J Antrim and Newtownabbey	Antrim and Newtownabbey District
K Carrickfergus, Larne and Ballymena	Mid and East Antrim District

Review of the Local Government Aspects of RPA – Decisions

Local Councils

The decision **not** to progress with aspects of Local Government Reform generated local Council elections based on the existing 26 council model in May 2011.

Transfer of existing functions to local Councils

There have been no developments in relation to the functions which will transfer to local councils. However in November 2010, the Department of Environment published a consultation document on the Policy Proposals for Local Government Reform. These proposals includes Governance arrangements for local councils; the introduction of Community Planning responsibilities and Power of Well-Being. Consultation closed in March 2011 and the responses will be analysed and presented to the Environment Minister, Mr Alex Atwood for consideration.

Transition Committees

As part of the Review of Public Administration, voluntary Transition Committees were established in each of the proposed 11 new council clusters. Given the delay in the introduction of the new councils, discussions are at an advanced stage to develop an Improvement, Collaboration and Efficiency (ICE) Programme.

The ICE Programme is led by local government through the Northern Ireland Local Government Association (NILGA) and Society of Local Authority Chief Executives (SOLACE). The aim of the programme is to support local councils in identifying opportunities through collaboration which will lead to improvements and efficiency savings for ratepayers. The programme also seeks to identify current examples of collaboration between councils including Rural Development Programme, Peace III Partnerships and Waste Management Groups.

Initial consultation with the 26 local councils has generated a positive response for the overall principals within the ICE Programme. A series of meetings are scheduled with the Minister for Environment, Mr Alex Attwood to discuss the way forward for the ICE Programme and further consultation will take place with key stakeholders in the near future.

A copy of the Improvement, Collaboration and Efficiency (ICE) Programme Consultation Final Report can be viewed on NILGA's website www.nilga.org/News/ICE-PROGRAMME-CONSULTATION---FINAL-REPORT.aspx

Boundary Commissioner for Northern Ireland

Mr Dick MacKenzie was appointed Local Government Boundaries Commissioner for Northern Ireland with effect from 1 July 2008. His role was to make recommendations to the Department of the Environment regarding the boundaries and names of the 11 new districts, and the number, boundaries and names of the wards into which each district is to be divided.

The Final Recommendations Report was published on 30 June 2009 and together with maps, can be accessed at all district council headquarters, public libraries, Area Electoral Offices and the Offices of the Electoral Commissioner and the Local Government Boundaries Commissioner. The Final Recommendations can also be viewed on the website www.lgbc-ni.org Queries about the Report should be addressed to:

Department of Environment
Local Government Policy Division
Goodwood House
44 - 58 May Street
BELFAST
BT1 4NN

Telephone: 028 9025 6075
Fax: 028 9025 6080
Email: lgpd@doeni.gov.uk

The following table provides a summary of the final recommendations from the Local Government Boundaries Commissioner:

New Council	Amalgamating Councils	No. of Wards
Belfast District	Belfast and small parts of Castlereagh, Lisburn and North Down	60
Antrim and Newtownabbey District	Antrim, Newtownabbey and a small part of Carrickfergus	40
Armagh, Banbridge and Craigavon District	Armagh, Craigavon, a major part of Banbridge and a small area of Dungannon and South Tyrone	41
Causeway Coast and Glens District	Ballymoney, Coleraine, Limavady and Moyle	40
Derry and Strabane District	Derry and Strabane	40
Fermanagh and Omagh District	Fermanagh and Omagh	40
Lisburn and Castlereagh District	Major parts of Lisburn and Castlereagh	40
Mid and East Antrim District	Ballymena, Larne and a major part of Carrickfergus	40
Mid Ulster District	Cookstown, Magherafelt and a major part of Dungannon and South Tyrone	40
Newry, Mourne and Down District	Newry and Mourne, Down and a small part of Banbridge	41
North Down and Ards District	Ards and a major part of North Down	40

The final recommendations from the Boundary Commissioner have yet to receive Northern Ireland Executive agreement.

Section 4 – New Health Structures

Patient and Client Council

Chief Executive: Ms Maeve Hully
Chairperson: Dr Maureen Edmondson

The Patient and Client Council replaced the Health and Social Services Councils with five local offices operating in the same geographical areas as the existing Trusts, to provide a strong voice for patients, clients and carers.

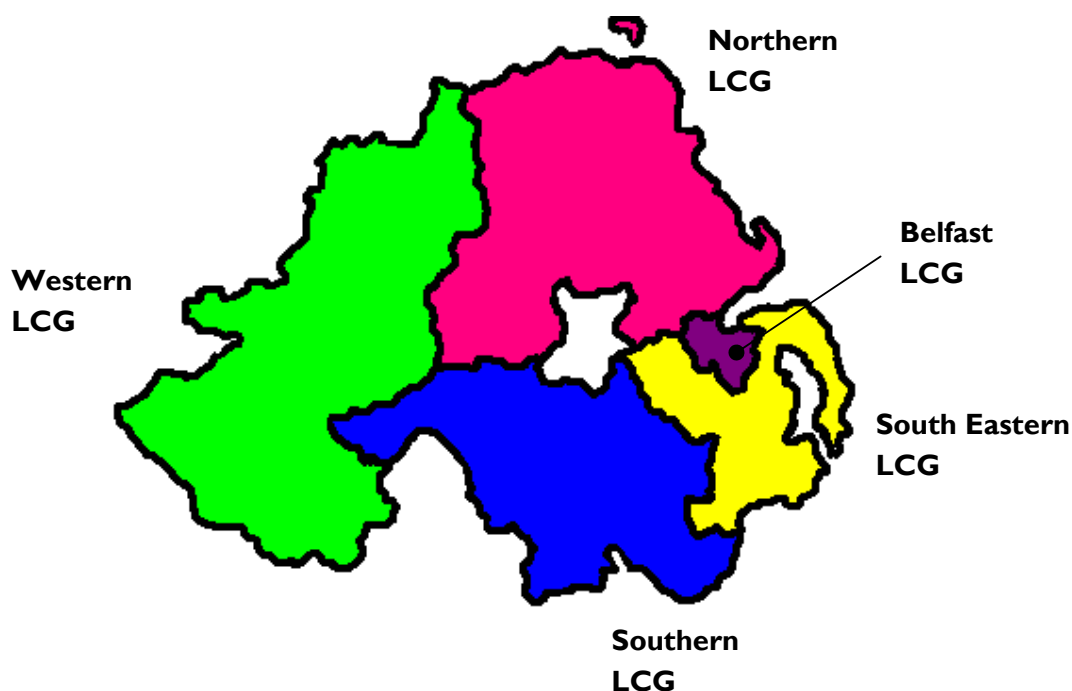
Contact Details: Freephone: 0800 917 0222
 Email: info.pcc@hscni.net

Local Commissioning Groups

The five Local Commissioning Groups established include the Belfast, South Eastern, Southern, Western and Northern Local Commissioning Groups and are co-terminus with the Health and Social Care Trust in that particular area (see map below). Local Commissioning Groups were set up to actively engage General Practitioners, other primary care professionals and the voluntary and community sector in the planning and redesign of services to secure better services for the communities they serve.

Membership of the Local Commissioning Groups include:

- 4 General Medical Practitioners;
- 1 Pharmacist;
- 1 Dentist;
- 2 Health and Social Care related Voluntary Sector Representatives.
- 4 Elected Local Representatives;
- 2 Social Care Professionals;
- 1 Nurse;
- 1 Public Health Medicine Professional;
- 1 Allied Health Professional;



Section 4 – New Health Structures

Local Commissioning Groups – Commissioning Leads

Belfast LCG

Iain Deboys
Health and Social Care Board
Eastern Office
12-22 Linenhall Street
Belfast BT2 8BS

Tel: (028) 9032 1313
Email: Iain.Deboys@hscni.net

Northern LCG

Bride Harkin
Health and Social Care Board
Northern Office
County Hall
182 Galgorm Road
Ballymena BT42 1QB

Tel: (028) 2531 1190
Email: bride.harkin@hscni.net

South Eastern LCG

Paul Turley
Health and Social Care Board
Eastern Office
12-22 Linenhall Street
Belfast BT2 8BS

Tel: (028) 9032 1313 ext. 2524
Email: Southeastern.lcg@hscni.net

Southern LCG

Lyn Donnelly
Health and Social Care Board
Southern Office
Tower Hill
Armagh BT61 9DR

Tel: (028) 3741 4600
Email: lyn.donnelly@hscni.net

Western LCG

Paul Cavanagh
Health and Social Care Board
Western Office
15 Gransha Park
Clooney Road, Derry
Londonderry BT47 6FN

Tel: (028) 7186 0086
Email: paul.cavanagh@hscni.net

Section 4 – New Health Structures

Health and Social Care Trusts

The merger in April 2007 of the 18 Health and Social Service Trusts into five new Health and Social Care Trusts, together with the Ambulance Service Trust will remain unchanged. The Trusts are:

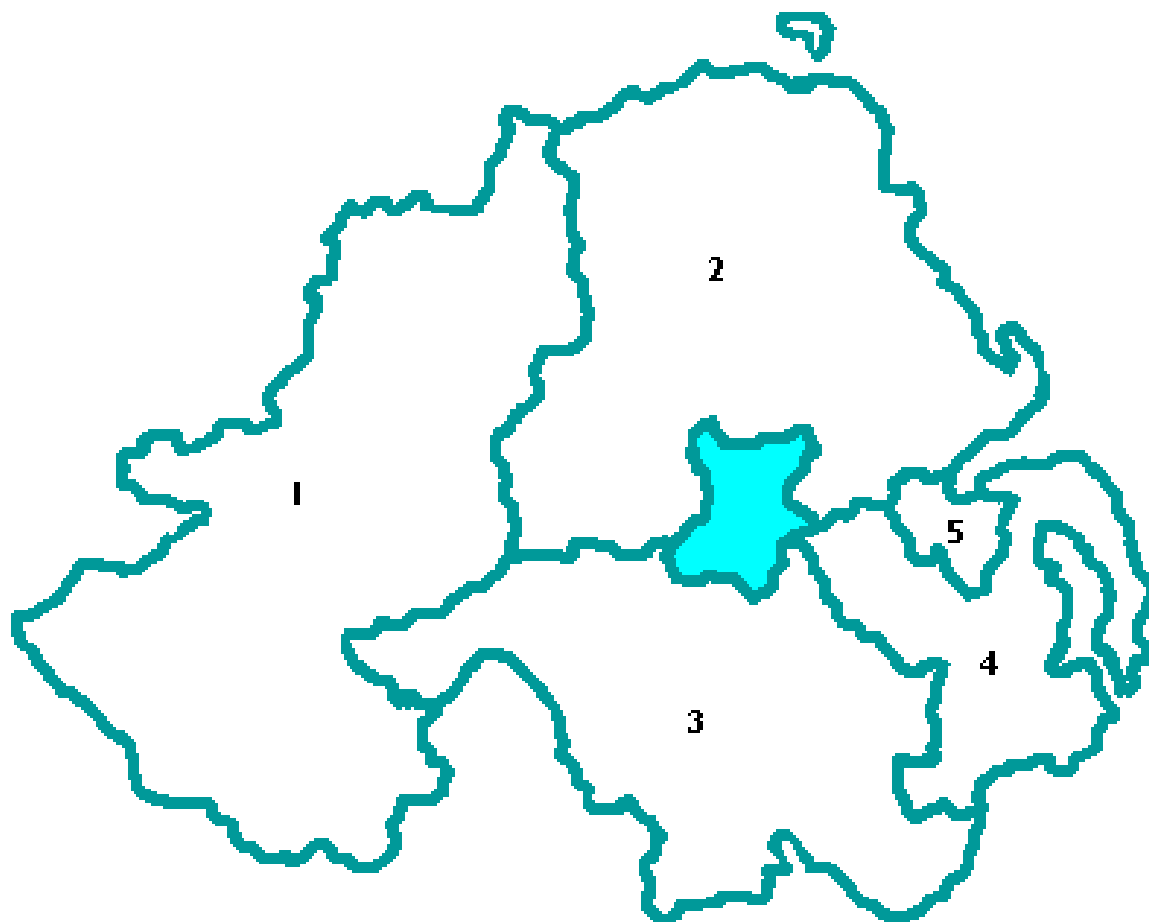
- Belfast Health and Social Care Trust;
- South Eastern Health and Social Care Trust;
- Southern Health and Social Care Trust;
- Western Health and Social Care Trust;
- Northern Health and Social Care Trust; and
- Northern Ireland Ambulance Service Trust.

Additional Reform Decisions

Additional decisions taken as part of the Modernisation of Health and Social Care in Northern Ireland include:

- NI Regional Medical Physics Agency has transferred to the Belfast Health and Social Care Trust;
- functions of the Mental Health Commission have transferred to the Regulation and Quality Improvement Authority (RQIA);
- NI Practice and Educational Council, NI Medical and Dental Training Agency, NI Guardian Ad Litem Agency, NI Social Care Council, Health Estates Agency and the Northern Ireland Blood Transfusion Service remain unchanged.

New Health and Social Care Trusts



Key:

1. Western Health and Social Care Trust
2. Northern Health and Social Care Trust
3. Southern Health and Social Care Trust
4. South Eastern Health and Social Care Trust
5. Belfast Health and Social Care Trust

The sixth Trust is the Ambulance Service Health and Social Care Trust, which provides statutory ambulance services throughout the Region.

Section 4 – New Health Structures

New Health and Social Care Trusts

Amalgamation of Existing Health and Social Services Trusts

New Health and Social Care Trust	Old Trusts
The Western Area Trust	<ul style="list-style-type: none"> • Sperrin Lakeland Trust • Foyle Health Social Services Trust • Altnagelvin Health and Social Services Trust <p>This would include the current local government districts of Derry, Fermanagh, Limavady, Omagh and Strabane.</p>
The Northern Area Trust	<ul style="list-style-type: none"> • Homefirst Community Trust • Causeway Health and Social Services Trust • United Hospitals Health and Social Services Trusts <p>This would include the current local government districts of Antrim, Ballymoney, Ballymena, Carrickfergus, Coleraine, Cookstown, Larne, Magherafelt, Moyle and Newtownabbey.</p>
The Southern Area Trust	<ul style="list-style-type: none"> • Craigavon Area Hospital Group • Craigavon and Banbridge Community Trust • Newry and Mourne Health and Social Services Trust • Armagh and Dungannon Health and Social Services Trust <p>This would include the current local government districts of Armagh, Banbridge, Craigavon, Dungannon and Newry and Mourne.</p>
The South Eastern Area Trust	<ul style="list-style-type: none"> • Ulster Community and Hospitals Trust • Down/Lisburn Trust <p>This will include the current local government districts of Ards, North Down, Down and Lisburn.</p>
The Belfast Trust	<ul style="list-style-type: none"> • Belfast City Hospital • Royal Group of Hospitals • Mater Hospital • Greenpark Health Care Trust • North and West Belfast Trust (including Muckamore Hospital) • South and East Belfast Health and Social Services Trust <p>This would include the current local government districts of Belfast and Castlereagh.</p> <p>(In developing the new management and governance structures for the new Belfast Area Trust, consideration will be given to the special status of the Mater Hospital, as stipulated in its Deed of Arrangement).</p>

Health and Social Care Trusts

Main Contacts

Belfast Health and Social Care Trust

Chief Executive: Colm Donaghy

Knockbracken Healthcare Park
Saintfield Road
Belfast BT8 8BH

Tel: (028) 9096 0000

Email: info@belfasttrust.hscni.net

South Eastern Health and Social Care Trust

Chief Executive: Hugh McCaughey

Ulster Hospital
Upper Newtownards Road
Dundonald
Belfast BT16 1RH

Tel: 028 9055 3100

Email: public.relations@setrust.hscni.net

Western Health and Social Care Trust

Chief Executive: Elaine Way

Trust HQ
MDEC Building
Altnagelvin Area Hospital Site
Glenshane Road
Derry Londonderry BT47 6SB

Tel: 028 7134 5171

Northern Health and Social Care Trust

Chief Executive: Sean Donaghy

Trust HQ
The Cottage
5 Greenmount Avenue
Ballymena BT43 6DA

Tel: 0845 6012333

Email: info@northerntrust.hscni.net

Southern Health and Social Care Trust

Chief Executive: Mairead McAlinden

Southern Area College of Nursing
Craigavon Area Hospital
68 Lurgan Road
Portadown BT63 5QQ

Tel: 028 3833 4444

Fax: 028 3833 5496

Email: corporate.hq@southerntrust.hscni.net

Northern Ireland Ambulance Service - Health and Social Care Trust

Chief Executive: Liam McIvor

Ambulance Headquarters
Site 30
Knockbracken Healthcare Park
Saintfield Road
Belfast BT8 8SG

Tel: 028 9040 0999

Fax: 028 9040 0900

Email: reception@nias.hscni.net

New Education Structures

The Review of Public Administration (RPA) in Education aims to be the most influential reform in a generation. The proposed restructuring will transform administration, improve standards, promote equality and enable more resources to be available for schools, therefore benefiting our children and young people.

The Department of Education will be responsible for:

- establishing the strategic direction for education;
- setting policy, priorities and standards for schools and youth services;
- allocating and monitoring resources; and
- ensuring the efficient and effective delivery of services by a new Education and Skills Authority.

Education and Skills Authority

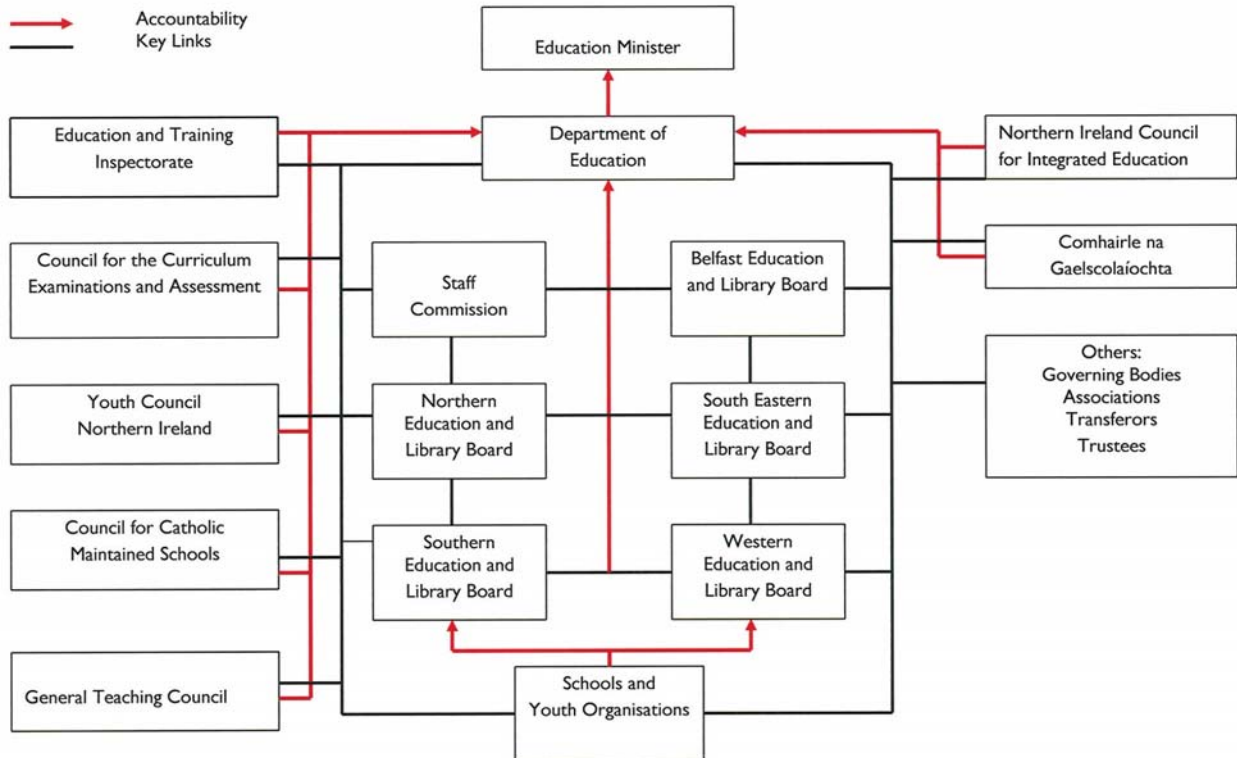
It is proposed that a new Education and Skills Authority (ESA) will take over the functions currently carried out by the five Education and Library Boards (ELBs), the Council for the Curriculum Examinations and Assessment (CCEA) and the Regional Training Unit (RTU). However with the date of the implementation for ESA having passed, a Convergence Delivery Plan has been agreed to continue the reform process until agreement is reached on the implementation of the Education and Skills Authority.

Under this Convergence Plan many of the services, currently delivered by individual Education and Library Boards, will be reorganised into a series of single, regionally managed services which continue to be delivered at a local level. This approach will create a consistent level of service quality and support, reduce bureaucracy, remove duplication and ensure equality of access across all ELB areas (www.esait.org.uk)

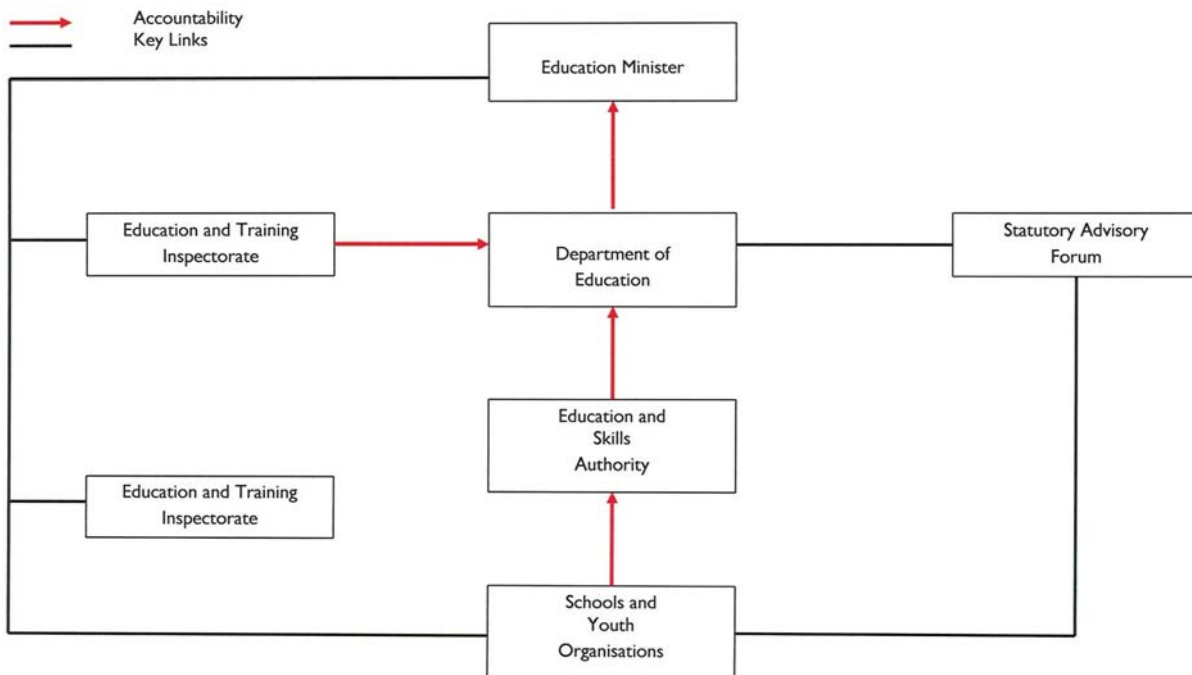
For more information on the Modernisation of the Education Sector visit the Department of Education's website at www.deni.gov.uk or contact the Education and Skills Authority's Implementation Team on: Telephone: (028) 9069 4964. E-mail: esait@deni.gov.uk

Section 5 – New Education Structures

Current Organisational Structure for Education

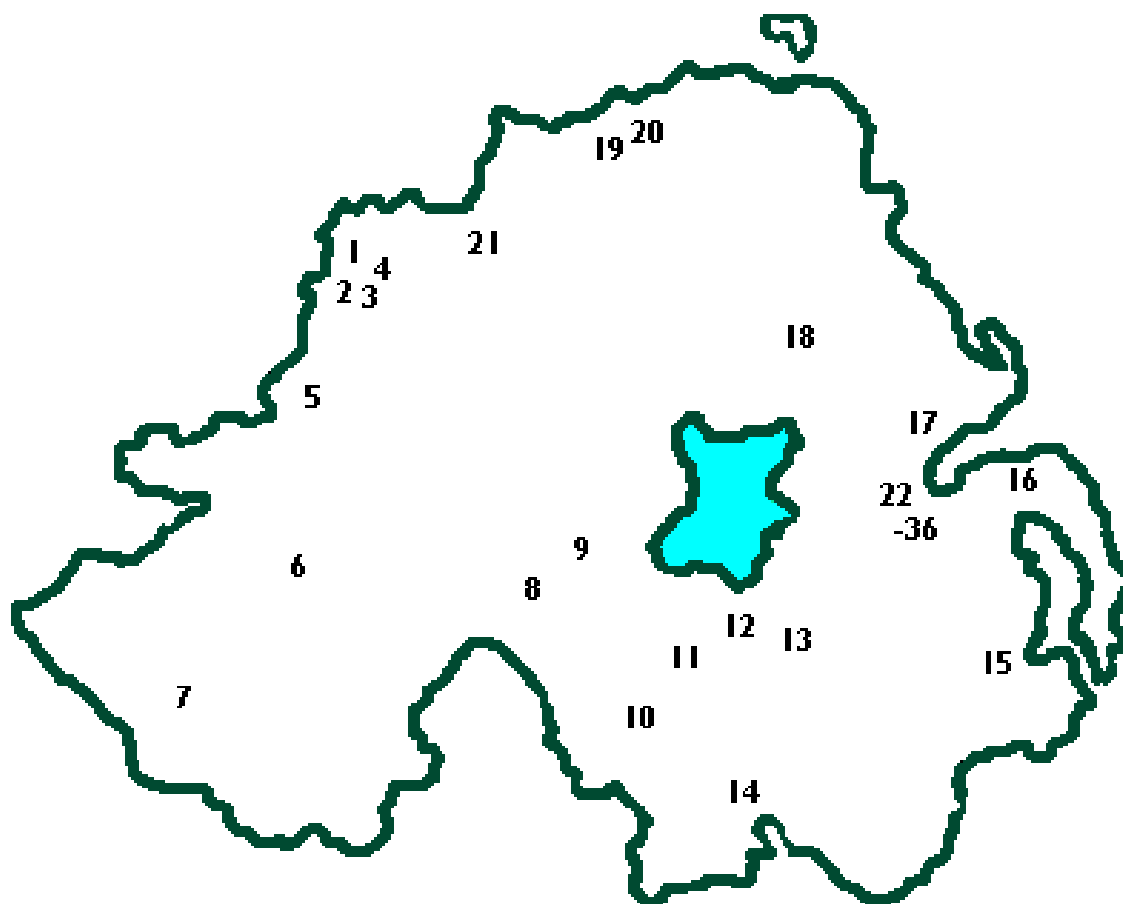


New Education Structures



Special Programmes

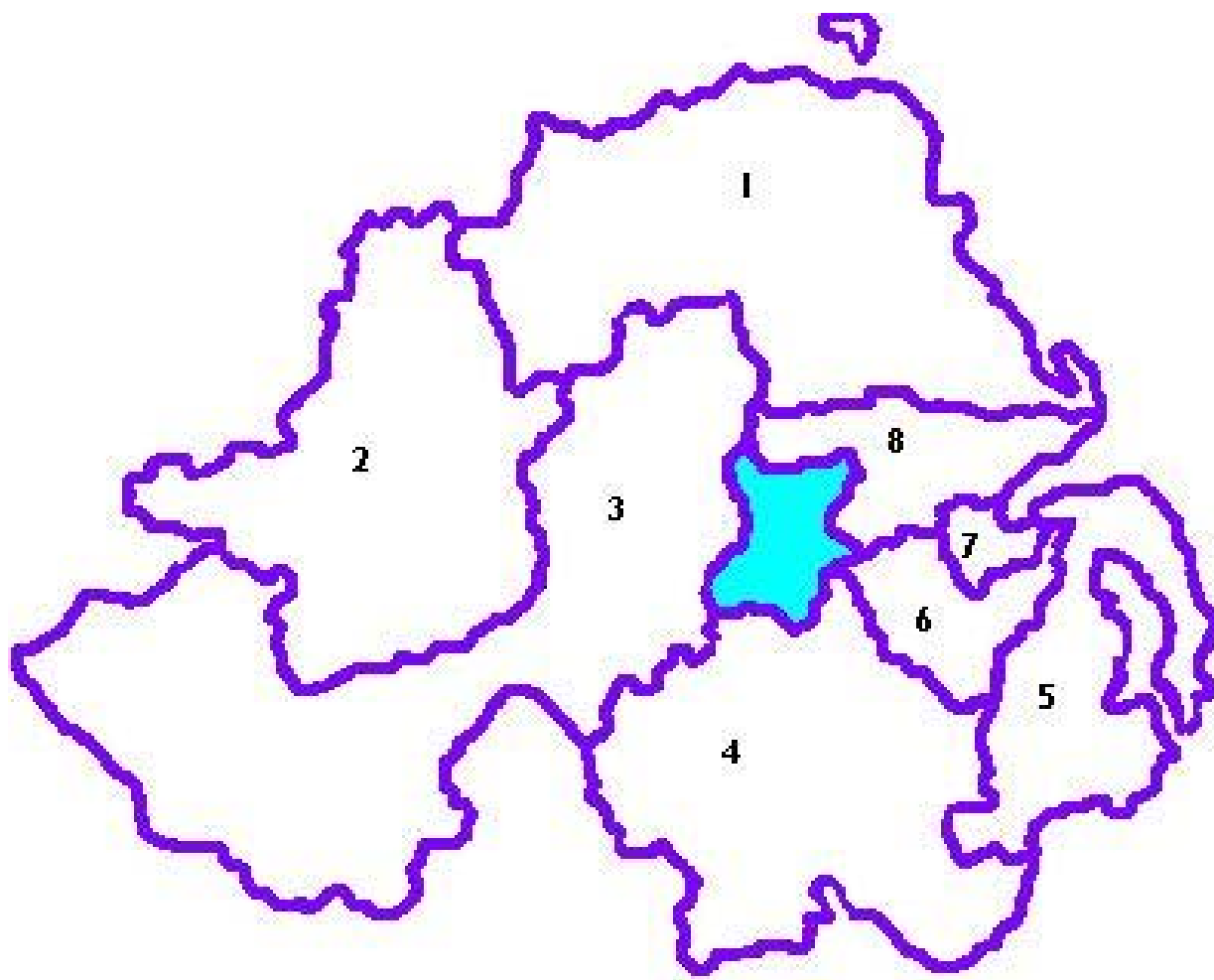
Neighbourhood Renewal Areas



Key:

1	Outer North	19	Churchlands
2	Outer West	20	Coleraine East
3	Triax	21	Limavady
4	Waterside	22	Colin
5	Strabane	23	Outer West Belfast
6	Omagh	24	Andersonstown
7	Enniskillen	25	Upper Springfield/Whiterock
8	Dungannon	26	South West Belfast
9	Coalisland	27	Falls/Clonard
10	Armagh	28	Inner South Belfast
11	Portadown	29	Tullycarnet
12	Brownlow	30	Inner East Belfast
13	Lurgan	31	Inner North Belfast
14	Newry	32	Crumlin/Ardoyne
15	Downpatrick	33	Upper Ardoyne/Ballysillan
16	Bangor	34	Ligoniel
17	Ballyclare	35	Greater Shankill
18	Ballymena	36	Rathcoole

Council Clusters for Peace III



1	Coleraine Larne Ballymena Moyle Ballymoney Limavady	2	Derry Omagh Strabane	3	Magherafelt Cookstown Dungannon Fermanagh
4	Newry and Mourne Banbridge Armagh Craigavon	5	North Down Ards Down	6	Lisburn Castlereagh
7	Belfast	8	Newtownabbey Carrickfergus Antrim		

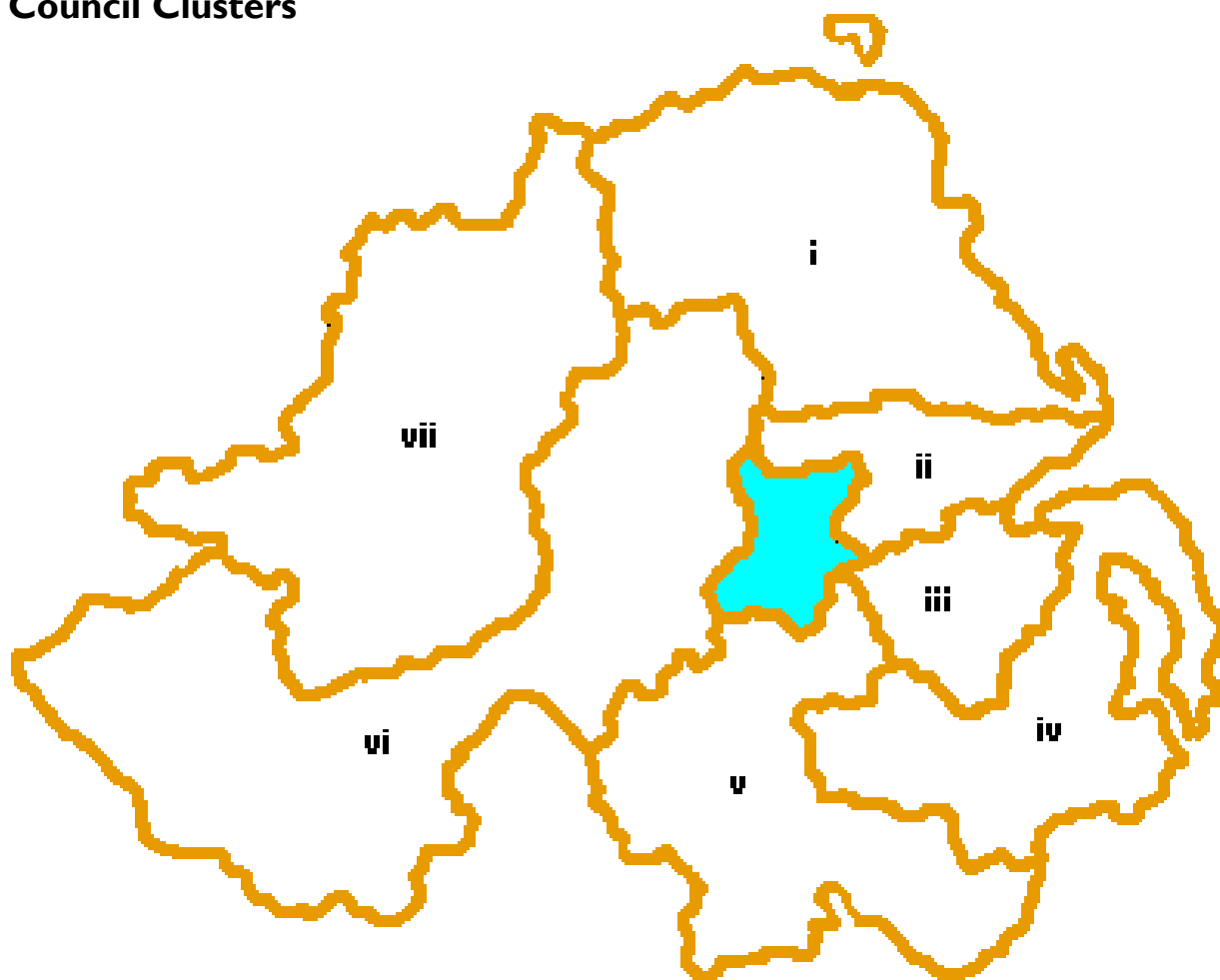
Lead Council in each Cluster is highlighted in Bold

Section 6 – Special Programmes

Contacts – Peace III Council Clusters

Cluster	Main Contact and Council	Address	Telephone Email Address
Coleraine Larne Ballymena Moyle Ballymoney Limavady	Patricia McCallion Coleraine Borough Council	Cloonavin 66 Portstewart Road Coleraine BT52 1EY	Tel: 028 7034 7012 peaceiii@colerainebc.gov.uk
Derry Omagh Strabane	Deirdre Harte Derry City Council	98 Strand Road Derry BT48 7NN	Tel: 028 7130 8466 deirdre.harte@derrycity.gov.uk
Magherafelt Cookstown Dungannon Fermanagh	Chris McCarney Magherafelt District Council	50 Ballyronan Road Magherafelt BT45 6EN	Tel: 028 7939 7979 chris.mccarney@magherafelt.org
Newry and Mourne Banbridge Armagh Craigavon	Sonya Burns Newry and Mourne District Council	O'Hagan House Monaghan Row Newry BT35 8DJ	Tel: 028 3031 3074 sonya.burns@newryandmourne.gov.uk
North Down Ards Down	Jan Nixey North Down Borough Council	Town Hall The Castle Newtownards BT20 4BT	Tel: 028 9127 8028 jan.nixey@northdown.gov.uk
Lisburn Castlereagh	Jim Rose Lisburn City Council	Island Civic Centre The Island Lisburn BT27 4RL	Tel: 028 9250 9550 jimr@lisburn.gov.uk
Belfast	Good Relations Unit Belfast City Council	Chief Executive's Department Belfast City Council City Hall Belfast BT1 5GS	Tel: 028 9032 0202 peaceiii@belfastcity.gov.uk
Newtownabbey Carrickfergus Antrim	Alison Keenan Newtownabbey Borough Council	Mossley Mill Newtownabbey BT36 5QA	Tel: 028 9034 0212 akeenan@newtownabbey.gov.uk

Rural Development Programme 2007-2013
Council Clusters



i **Ballymena**
Ballymoney
Larne
Coleraine
Moyle

ii **Antrim**
Newtownabbey
Carrickfergus

iii **Lisburn**
Belfast
Castlereagh

iv **Ards**
North Down
Down
Banbridge

v **Armagh**
Craigavon
Newry and Mourne

vi **Cookstown**
Magherafelt
Dungannon
Fermanagh

vii **Omagh**
Strabane
Derry
Limavady

Lead Council in each Cluster is highlighted in Bold

Section 6 – Special Programmes

Contacts – Rural Development Programme 2007 – 2013 Council Clusters

Cluster	Main Contact and Council	Address	Telephone Email/Website Address
Ballymena Ballymoney Larne Coleraine Moyle	Andrew McAlister Ballymena Borough Council	North East Region Ecos Centre Kernohan's Lane Ballymena BT43 7QA	Tel: 028 2563 8263 Andrew.rdp@ballymena.gov.uk www.northeastrdp.com
Antrim Newtownabbey Carrickfergus	Emma Stubbs Antrim Borough Council	Antrim Civic Centre 50 Stiles Way Antrim BT41 2UB	Tel: 028 9448 1311 emma.stubbs@antrim.gov.uk www.growsouthantrim.com
Lisburn Belfast Castlereagh	Padraic Murphy Lisburn City Council	Island Civic Centre The Island Lisburn BT27 4RL	Tel: 028 9250 9489 padraic.murphy@lisburn.gov.uk www.laganruralpartnership.com
Ards North Down Down Banbridge	Marguerite Osborne Down Rural Area Partnership	Ards Business Centre Sketrick House Jubilee Road Newtownards BT23 4YH	Tel: 028 91820748 marguerite.osborne@ards-council.gov.uk www.downruralareapartnership.com
Craigavon Armagh Newry and Mourne	Elaine Cullen Craigavon Borough Council	Civic Centre Lakeview Road Craigavon BT64 1AL	Tel. 028 3831 2573 craigavon@soarni.org www.soarni.org
Cookstown Magherafelt Dungannon Fermanagh	Terence Scullion Cookstown District Council	South West Action for Rural Development 94 Church Street Cookstown BT80 8HX	Tel: 028 8676 4714 sward@cookstown.gov.uk www.sward.org.uk
Omagh Strabane Derry Limavady	Claudine McGuigan Omagh District Council	Arc North West Omagh District Council The Grange Mountjoy Road Omagh BT79 7BL	Tel: 028 8225 0202 claudine.mcguigan@omagh.gov.uk www.arcnorthwest.com

Sub Regional Community Networks

Community Development Networks Forum

The Community Development Networks Forum was set up in 2002 as the support mechanism for Sub-regional and Urban Networks.



The main objectives of the Forum are:

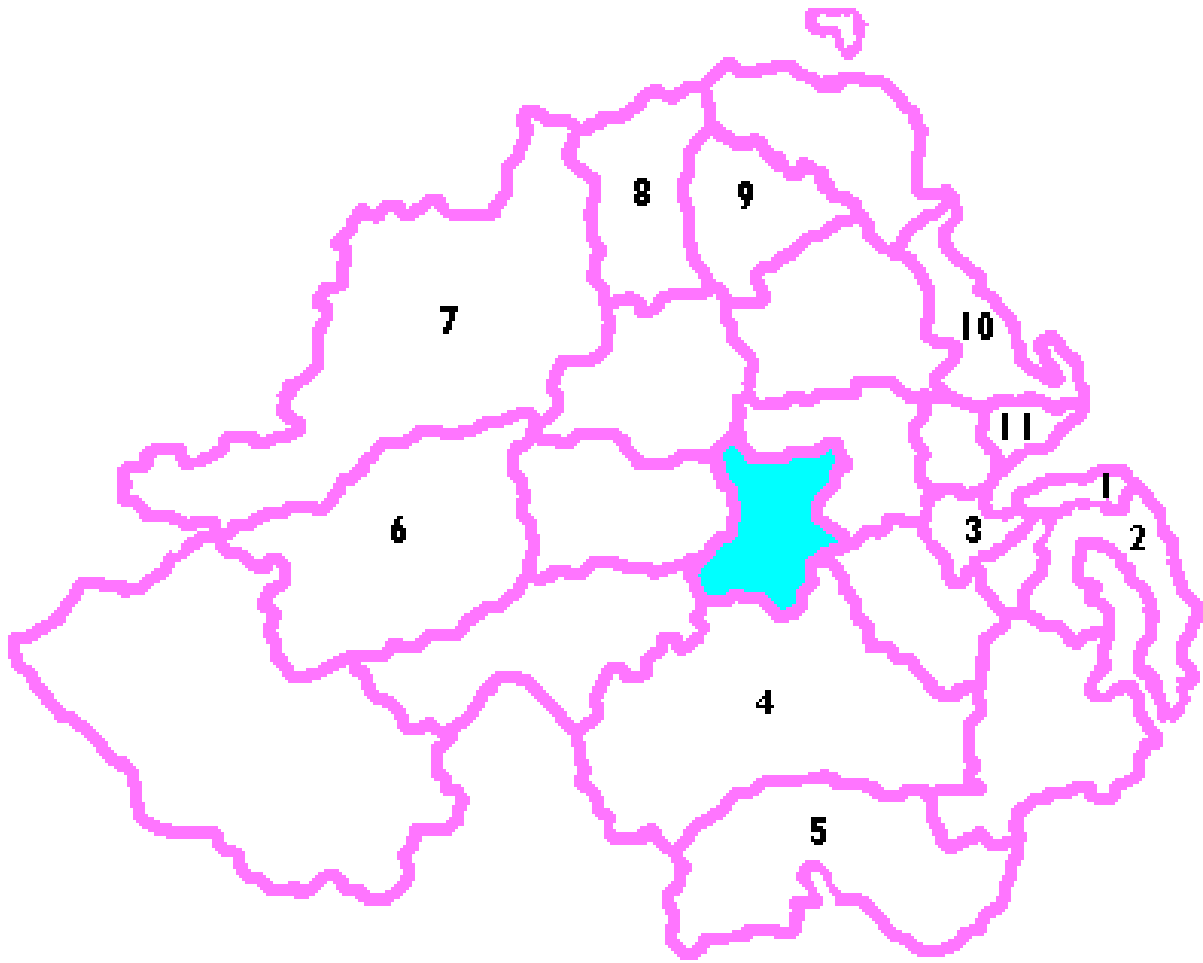
- to act as a support mechanism for community development networks;
- to act as a platform for the sharing of information;
- to organise events as and when necessary;
- to represent the views of the membership;
- to highlight issues affecting the wider community sector;
- to lobby for long term core funding from central government.

The Forum currently has eleven member Networks, based throughout the region. The member Networks are:

- Ards Development Bureau and Community Network
- Ballymoney Community Resource Centre
- Carrickfergus Community Forum
- Causeway Rural and Urban Network
- ABC Community Network
- Confederation of Community Groups Newry and Mourne
- East Belfast Community Development Agency
- FOCUS
- Larne Community Development Project
- North Down Community Network
- North West Community Network

If you would like more information on the Community Development Networks Forum, please contact Cathy Rice, Forum Chairperson on 028 9181 4625 or by email at info@ardscommunitynetwork.com

Community Development Networks Forum



Key:

1. North Down Community Network
2. Ards Development Bureau and Community Network
3. East Belfast Community Development Agency
4. ABC Community Network
5. Confederation of Community Groups Newry and Mourne
6. FOCUS
7. North West Community Network
8. Causeway Rural and Urban Network
9. Ballymoney Community Resource Centre
10. Larne Community Development Project
11. Carrickfergus Community Forum

Section 7 – Sub Regional Community Networks

Contacts - Community Development Networks Forum Members

Organisation	Name	Address	Telephone/Fax/Email
North Down Community Network	TBA (Co-ordinator)	North Down Community Resource Centre 5 Castle Park Road Bangor BT20 4TF	Tel: 028 9146 1386 ndcn@hotmail.com
Ards Development Bureau and Community Network	Cathy Rice (Project Manager)	2b James Street Newtownards BT23 4DY	Tel: 028 9181 4625 info@ardscommunitynetwork.com
East Belfast Community Development Agency	Michael Briggs (Director)	269 Albertbridge Road Belfast BT5 4PY	Tel: 028 9045 1512 info@ebcda.org
ABC Community Network	John McGuinness (Director)	22 Church Street Portadown BT62 3LQ	Tel: 028 3839 2777 info@abccommunitynetwork.com
Confederation of Community Groups Newry and Mourne	Raymond Jackson (Interim Director)	Ballybot House 28 Cornmarket Newry BT35 8GB	Tel: 028 3026 1022 info@ccgnewrycommunity.org
FOCUS	Conor Keys (Co-ordinator)	2 Drumragh Avenue Omagh Tyrone BT78 1DP	Tel: 028 8224 0991 focuscommunity@yahoo.co.uk
North West Community Network	Colin Devine (Co-ordinator)	23 Bishop Street Derry – Londonderry BT48 6PR	Tel: 028 7127 9090 colin@nwc.org
Causeway Rural and Urban Network	Ann McNickle (Project Manager)	1A Railway Street Coleraine BT52 1PD	Tel: 028 7034 4934 ann@crun.org
Ballymoney Community Resource Centre	Lyn Moffett (Co-ordinator)	Unit 1 Doltone Business Park 25 Ballymena Road Ballymoney BT53 7EX	Tel : 028 2766 5068 info@ballymoneycrc.org.uk
Larne Community Development Project	Deborah Neill (Community Development Officer)	C/o Unit 25 Ledcom Industrial Estate Bank Road Larne BT40 3AW	Tel: 028 2826 7976 info@larnecdp.org.uk
Carrickfergus Community Forum	Billy Ashe (Co-ordinator)	Miskimmon Suite Old Town Hall Antrim Street Carrickfergus BT38 7DG	Tel: 028 9335 8777 billyashe@btinternet.com

Rural Community Network and Rural Support Networks

The Rural Community Network is a regional voluntary organisation established by community groups from rural areas in 1991 to articulate the voice of rural communities on issues relating to poverty, disadvantage and equality. It is a membership organisation and is managed by a voluntary Board of Directors, elected every two years. Two community representatives from each of the six counties make up the main component of the Network's Board with statutory, voluntary, farming, environmental, District Council, cross border and other sectoral groups making up the rest.

The Strategic Aims of the Rural Community Network are:

Aim 1 - Empowering the voice of rural communities

Aim 2 - Championing excellence in rural community development practice

Aim 3 - Developing civic leadership in rural communities

Aim 4 - Actively working towards an equitable and peaceful society

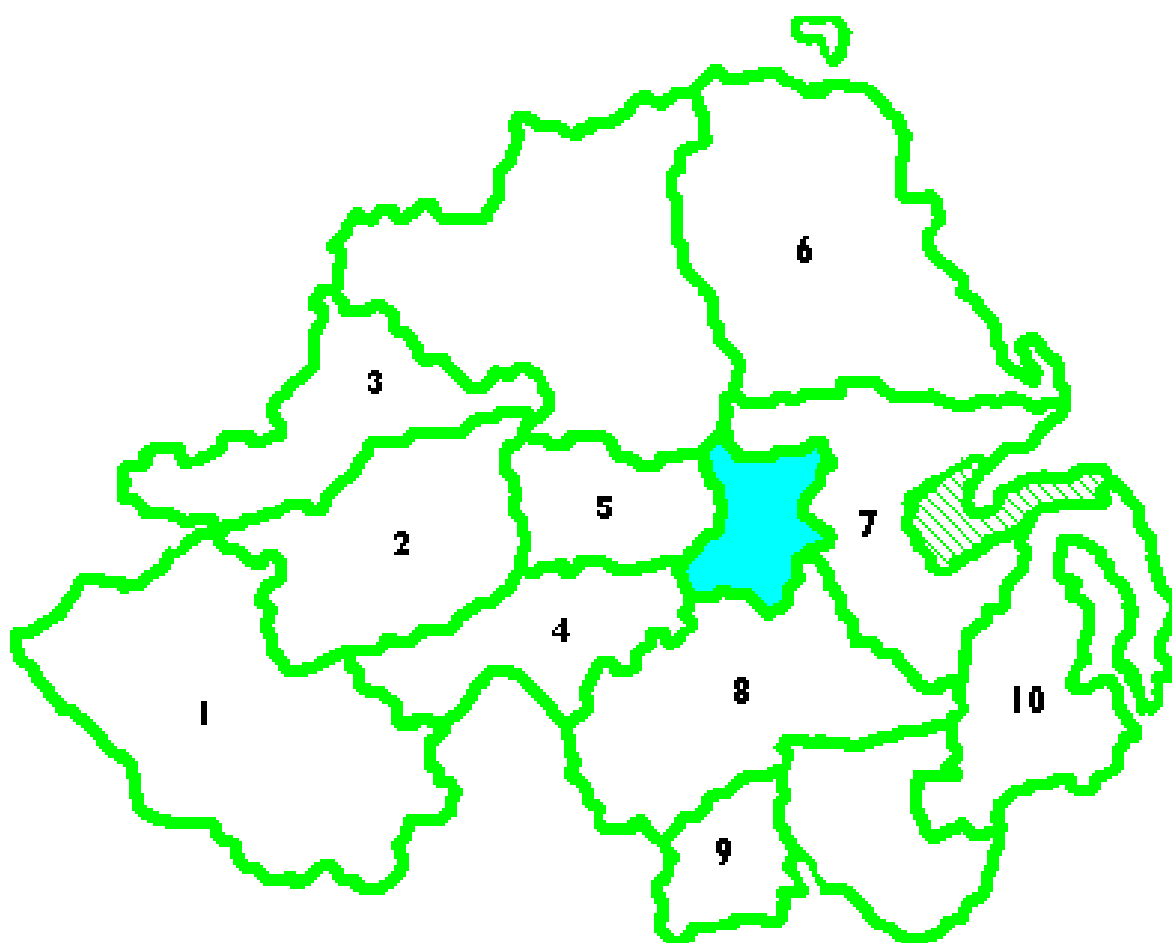
Aim 5 - Promoting the sustainable development of rural communities

Rural Community Network works in partnership with the ten Rural Support Networks to support rural communities. The ten Rural Support Networks are:

- Fermanagh Rural Community Network
- Omagh Forum
- Rural North West Community Support
- Community Organisations of South Tyrone and Area
- Cookstown and Western Shores Area Network
- North Antrim Community Network
- South Antrim Rural Network
- TADA Rural Support Network
- Regeneration of South Armagh
- East Down Rural Community Network

The geographical areas covered by the Rural Support Networks can be viewed on the map overleaf.

Rural Support Networks



Key:

1. Fermanagh Rural Community Network
2. Omagh Forum
3. Rural North West Community Support
4. Community Organisations of South Tyrone and Area
5. Cookstown and Western Shores Area Network
6. North Antrim Community Network
7. South Antrim Rural Network
8. TADA Rural Support Network
9. Regeneration of South Armagh
10. East Down Rural Community Network

Section 7 – Sub Regional Community Networks

Contacts – Rural Networks

Organisation	Name	Address	Telephone/Fax/ Email
Fermanagh Rural Community Network	Barry Boyle	The Intec Centre 36 East Bridge Street Enniskillen BT74 6AJ	Tel: 028 6632 7006 fermanaghrcn@aol.com
Omagh Forum	Mary T Conway/ Aidan Bunting	2 Drumragh Avenue Omagh BT78 1DP	Tel: 028 8225 1559 info@omaghforum.org
Rural North West Community Support	Brian O'Brien/ Brenda Morris	23 Main Street Newtownstewart BT78 4AD	Tel: 028 8166 2588 sdcnetwork@btconnect.com
Community Organisations of South Tyrone and Area	Lorraine Griffin	President Grant's Homestead 45 Derenagh Road Dungannon BT70 1TW	Tel: 028 8555 6880 costa.augher@virgin.net
Cookstown and Western Shores Area Network	Conor Corr	The Crieve Centre 2 Hillhead Stewartstown BT71 5HY	Tel: 028 8773 8845 cwsan@aol.com
North Antrim Community network	Briege Conway	Old School House Mill Street Cushendall BT44 0RR	Tel: 028 2177 2100 info@nacn.org
South Antrim Rural Network	Emma Keenan	Unit 6 The Arches 38-40 Main Street Randalstown BT41 3AB	Tel: 028 9447 8645 info@southantrimruralnetwork.org
TADA Rural Support Network	Ruth Cranston	Unit 10a Carn Business Park Portadown BT63 5WG	Tel: 028 3839 8888 info@tadaruralsupportnetwork.org

Section 7 – Sub Regional Community Networks

Organisation	Name	Address	Telephone/Fax/Email
Regeneration of South Armagh	Rosaleen Quigley	25-26 Cardinal O' Fiaich Square Crossmaglen BT35 9HG	Tel: 028 3086 8183 rosaleen@rosa.ie
East Down Rural Community Network	Nicholas McCrickard	Ballymote Centre 40 Killough Road Downpatrick BT30 6PY	Tel: 028 4461 2311 nicholas@eastdownrcn.com
Rural Community Network	Michael Hughes	38a Oldtown Street Cookstown BT80 8EF	Tel: 028 8676 6670 info@ruralcommunitynetwork.org

Northern Ireland Assembly

The Northern Ireland Assembly is the devolved government of Northern Ireland. It is responsible for making and enacting laws on transferred matters in Northern Ireland including housing, environment and education. The Assembly sits at Parliament Buildings, Stormont Estate, in Belfast. Members (MLAs) meet to debate issues and introduce laws to support the people of Northern Ireland.

The Assembly gives executive power to an Executive Committee which makes many of the Assembly’s day-to-day decisions. This committee is made up of the First Minister and deputy First Minister along with a minister for each of the 11 government departments. Two Junior Ministers assist the First and deputy First Ministers. The Executive Committee meets to discuss and agree on issues which cut across the responsibilities of two or more Ministers.

Northern Ireland Executive

Minister	Department	Party	Constituency
Peter Robinson	First Minister - OFMDFM	DUP	Belfast East
Martin McGuinness	Deputy First Minister - OFMDFM	SF	Mid Ulster
Johnathan Bell	Junior Minister - OFMDFM	DUP	Strangford
Martina Anderson	Junior Minister - OFMDFM	SF	Foyle
Michelle O’Neill	Agriculture and Rural Development	SF	Mid Ulster
Carál Ní Chuilín	Culture, Arts and Leisure	SF	Belfast North
John O’Dowd	Education	SF	Upper Bann
Dr Stephen Farry	Employment and Learning	ALL	North Down
Arlene Foster	Enterprise, Trade and Investment	DUP	Fermanagh and South Tyrone
Alex Attwood	Environment	SDLP	Belfast West
Sammy Wilson	Finance and Personnel	DUP	East Antrim
Edwin Poots	Health, Social Services and Public Safety	DUP	Lagan Valley
David Ford	Justice	ALL	South Antrim
Danny Kennedy	Regional Development	UUP	Newry and Armagh
Nelson McCausland	Social Development	DUP	Belfast North

Committee Membership

The Assembly also has 12 statutory committees which oversee the work of their respective department. The committees are comprised of MLA's and are support by NI Assembly staff. Membership of these committees will change; therefore it is important to refer to the Northern Ireland Assembly website (www.niassembly.gov.uk) for up-to-date information.

Agriculture and Rural Development Committee

Member	Party	Constituency
Paul Frew (Chair)	DUP	North Antrim
Dolores Kelly (Deputy Chair)	SDLP	Upper Bann
Thomas Buchanan	DUP	West Tyrone
Trevor Clarke	DUP	South Antrim
Willie Clarke	SF	South Down
Jo-Anne Dobson	UUP	Upper Bann
William Irwin	DUP	Newry and Armagh
Kieran McCarthy	ALL	Strangford
Oliver McMullan	SF	East Antrim
Conor Murphy	SF	Newry and Armagh
Robin Swann	UUP	North Antrim

Committee for the Office of the First Minister and deputy First Minister

Member	Party	Constituency
Tom Elliott (Chair)	UUP	Fermanagh and South Tyrone
Chris Lyttle (Deputy Chair)	ALL	Belfast East
Trevor Clarke	DUP	South Antrim
Colum Eastwood	SDLP	Foyle
William Humphrey	DUP	Belfast North
Alex Maskey	SF	Belfast South
Francie Molloy	SF	Mid-Ulster
Sandra Overend	UUP	Mid-Ulster
George Robinson	DUP	East Londonderry
Catriona Ruane	SF	South Down
Jimmy Spratt	DUP	Belfast South

Section 8 – Northern Ireland Assembly

Culture, Arts and Leisure Committee

Member	Party	Constituency
Michelle McIlveen (Chair)	DUP	Strangford
William Irwin (Deputy Chair)	DUP	Newry and Armagh
Dominic Bradley	SDLP	Newry and Armagh
Brenda Hale	DUP	Lagan Valley
David Hilditch	DUP	East Antrim
Gerry Kelly	SF	Belfast North
Michael McGimpsey	UUP	Belfast South
Karen McKeivitt	SDLP	South Down
Cathal Ó hOisín	SF	East Londonderry
Pat Sheehan	SF	Belfast West
Robin Swann	UUP	North Antrim

Education Committee

Member	Party	Constituency
Mervyn Storey (Chair)	DUP	North Antrim
David McNarry (Deputy Chair)	UUP	Strangford
Michaela Boyle	SF	West Tyrone
Johnathan Craig	DUP	Lagan Valley
Jo-Anne Dobson	UUP	Upper Bann
Phil Flanagan	SF	Fermanagh & South Tyrone
Brenda Hale	DUP	Lagan Valley
Trevor Lunn	ALL	Lagan Valley
Conall McDevitt	SDLP	Belfast South
Michelle McIlveen	DUP	Strangford
Daithí McKay	SF	North Antrim

Section 8 – Northern Ireland Assembly

Employment and Learning Committee

Member	Party	Constituency
Basil McCrea (Chair)	UUP	Lagan Valley
Tom Buchanan (Deputy Chair)	DUP	West Tyrone
Jim Allister	TUV	North Antrim
Sammy Douglas	DUP	Belfast East
Michelle Gildernew	SF	Fermanagh and South Tyrone
Chris Lyttle	ALL	Belfast East
Barry McElduff	SF	West Tyrone
David McIlveen	DUP	North Antrim
Sandra Overend	UUP	Mid-Ulster
Pat Ramsay	SDLP	Foyle
Alastair Ross	DUP	East Antrim

Enterprise, Trade and Investment Committee

Member	Party	Constituency
Alban Maginness (Chair)	SDLP	Belfast North
Daithí McKay (Deputy Chair)	SF	North Antrim
Steven Agnew	GREEN	North Down
Gordon Dunne	DUP	North Down
Phil Flanagan	SF	Fermanagh and South Tyrone
Alasdair McDonnell	SDLP	Belfast South
David McIlveen	DUP	North Antrim
Stephen Moutray	DUP	Upper Bann
Mike Nesbitt	UUP	Strangford
Robin Newton	DUP	Belfast East
Sue Ramsay	SF	Belfast West

Section 8 – Northern Ireland Assembly

Environment Committee

Member	Party	Constituency
Anna Lo (Chair)	ALL	Belfast South
Simon Hamilton (Deputy Chair)	DUP	Strangford
Cathal Boylan	SF	Newry and Armagh
Paula Bradley	DUP	Belfast North
Willie Clarke	SF	South Down
John Dallat	SDLP	East Londonderry
Mr Danny Kinahan	UUP	South Antrim
Patsy McGlone	SDLP	Mid-Ulster
Francie Molloy	SF	Mid-Ulster
Lord Morrow	DUP	Fermanagh and South Tyrone
Peter Weir	DUP	North Down

Finance and Personnel Committee

Member	Party	Constituency
Conor Murphy (Chair)	SF	Newry and Armagh
Dominic Bradley (Deputy Chair)	SDLP	Newry and Armagh
Judith Cochrane	ALL	Belfast East
Leslie Cree	UUP	North Down
Paul Girvan	DUP	South Antrim
David Hilditch	DUP	East Antrim
William Humphrey	DUP	Belfast North
Ross Hussey	UUP	West Tyrone
Mitchell McLaughlin	SF	South Antrim
Adrian McQuillan	DUP	East Londonderry
Catriona Ruane	SF	South Down

Section 8 – Northern Ireland Assembly

Health, Social Services and Public Safety Committee

Member	Party	Constituency
Michelle Gildernew (Chair)	SF	Fermanagh and South Tyrone
Jim Wells (Deputy Chair)	DUP	South Down
Michaela Boyle	SF	West Tyrone
Paula Bradley	DUP	Belfast North
Mickey Brady	SF	Newry & Armagh
Gordon Dunne	DUP	North Down
Mark H Durkan	SDLP	Foyle
Samuel Gardiner	UUP	Upper Bann
Pam Lewis	DUP	South Antrim
John McCallister	UUP	South Down
Kieran McCarthy	ALL	Strangford

Committee for Justice

Member	Party	Constituency
Paul Givan (Chair)	DUP	Lagan Valley
Raymond McCartney (Deputy Chair)	SF	Foyle
Sydney Anderson	DUP	Upper Bann
Stewart Dickson	ALL	East Antrim
Colum Eastwood	SDLP	Foyle
Seán Lynch	SF	Fermanagh & South Tyrone
Alban Maginness	SDLP	Belfast North
Jennifer McCann	SF	Belfast West
Peter Weir	DUP	North Down
Jim Wells	DUP	South Down

Section 8 – Northern Ireland Assembly

Regional Development Committee

Member	Party	Constituency
Jimmy Spratt (Chair)	DUP	Belfast South
Pat Doherty (Deputy Chair)	SF	West Tyrone
Roy Beggs	UUP	East Antrim
Joe Byrne	SDLP	West Tyrone
Dolores Kelly	SDLP	Upper Bann
Stewart Dickson	ALL	East Antrim
Seán Lynch	SF	Fermanagh & South Tyrone
Ian McCrea	DUP	Mid-Ulster
Stephen Moutray	DUP	Upper Bann
Mike Nesbitt	UUP	Strangford
Cathal Ó hOisín	SF	East Londonderry

Social Development Committee

Member	Party	Constituency
Alex Maskey (Chair)	SF	Belfast South
Mickey Brady (Deputy Chair)	SF	Newry and Armagh
Gregory Campbell	DUP	East Londonderry
Judith Cochrane	ALL	Belfast East
Michael Copeland	UUP	Belfast East
Mark H Durkan	SDLP	Foyle
Sammy Douglas	DUP	Belfast East
Alex Easton	DUP	North Down
Pam Lewis	DUP	South Antrim
Fra McCann	SF	Belfast West
David McClarty	IND	East Londonderry

Community Places

- provides advice on planning issues for community groups and individuals;
- supports community involvement in Community Planning;
- facilitates community consultation and research; and
- provides advice to community building projects.

We work with urban and rural community and voluntary groups across the region in support of their work to influence and shape the planning and development of their communities. We also independently facilitate public and community consultation on planning and public services issues. All of our work is underpinned by our commitment to inclusion, targeting need, equality, and equity. Much of our advice and support for groups is free. Where we need to charge a fee we only do so when funding is available and agree this with groups in advance.

The organisation was established in 1984 (under its previous name Community Technical Aid). It is managed by a voluntary Board of Directors who are elected annually from our membership. We currently have a membership of over 250 community and voluntary groups and networks from across the region. Membership is also open to individuals who support our aims and objectives. The organisation currently employs seven staff to provide our services to groups and individuals.

For advice and information telephone 9023 9444 (groups), 9023 5545 (individuals), email info@communityplaces.info or write to:

Community Places
2 Downshire Place
Great Victoria Street
BELFAST BT2 7JQ

www.communityplaces.info

**Community
Places**

